

2021 GLA



2021 GLA

05

KEY FEATURES

06

MODEL OVERVIEW

11

PACKAGES

12

SUV

16

AMG SUV

20

BUILD YOUR OWN

25

OWNERSHIP



GET OUT MORE

GET MORE OUT

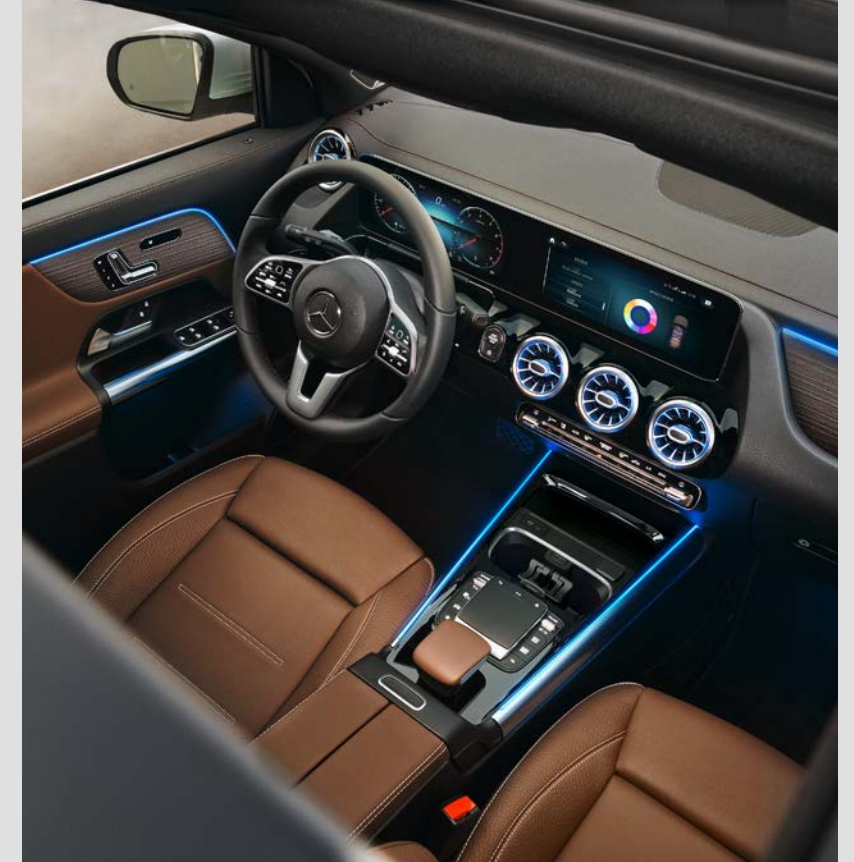


Standard and available equipment may vary by model. Please see back of brochure.



THE ALL NEW 2021 GLA SUV

Even with small footprints, giant steps are possible. The most compact member of the Mercedes-Benz SUV family is completely redesigned for 2021. It packs fresh ideas into a stylish and spacious new body. And it's even more eager to take on your ideas of spontaneous adventure and everyday fun. All with a commanding view of what's ahead—on the road, and into a future you'll be driving.



KEY FEATURES



Innovative thinking becomes ingenuity in action. From turbo power to a digital voice assistant, the new GLA responds to your driving inputs and your spoken words with clear enthusiasm.

LUXURY 08

- Power front seats, each with 3-position memory
- Power liftgate
- Heated or heated/ventilated front seats*
- Dual-zone climate control
- 64-color LED ambient lighting*
- Burmester® surround sound*



CAPABILITY 09

- 40/20/40-split folding/reclining/sliding* rear seats
- Engines: Inline-4 turbo, AMG-enhanced inline-4 turbo, or handcrafted AMG inline-4 turbo
- 18"-21" alloy wheels! DYNAMIC SELECT drive modes
- Variable-torque 4MATIC® all-wheel drive,* Off-Road Engineering Package w/Downhill Speed Regulation*
- Adaptive suspension,* AMG RIDE CONTROL with 3-stage damping (AMG models)



TECHNOLOGY 10

- Dual 7" or 10.25"* digital instrument cluster and central multimedia touchscreen, steering-wheel Touch Control Buttons, console touchpad
- Apple CarPlay™ and Android Auto
- Mercedes-Benz User Experience (MBUX) w/"Hey, Mercedes" voice assistant; MBUX gesture control*
- Mercedes me connect* featuring smartphone app with Remote Start, 4G LTE WiFi,* and more²



SAFETY 10

- Intelligent Drive* driver assistance suite, including Active Distance Assist DISTRONIC®, Active Steering Assist, Active Brake Assist w/Cross-Traffic Function, Active Lane Change and Speed Limit Assists, PRE-SAFE® PLUS, PRE-SAFE Sound, Route-based Speed Adaptation
- Rearview camera, Blind Spot Assist
- PARKTRONIC with Active Parking Assist and Surround View System*



*Optional or not available on some models. Please see endnotes at back of brochure.



PERFECTLY FIT. AND PERFECTLY FITTING.

It's common knowledge that Mercedes-Benz engineers don't rely on conventional thinking. That's how the inventors of the first car keep reinventing it—sometimes not even as a car. Enter the GLA. No, really, get in. OK, run your eyes along its toned, athletic body for a moment, but hurry up and climb in. There's a lot to see here. The cockpit is fully digital, with twin side-by-side screens. One of them is a touchscreen—and it's just one of three touch interfaces that bring a world of fun features to your fingertips. But that isn't the part that has people talking. The GLA comes with your own digital voice assistant that responds a lot like a real person when

you talk to it like, well, a real person. Fire up its turbo engine, and it'll fire you up, too. The GLA also responds like a Mercedes-Benz. It's sporty, confident and agile—and never lets being a roomy and versatile SUV deny you the joy of driving. The cabin space that fits inside its compact body might surprise you, but its physically fit looks are not the least bit deceiving when you take to the road. It also offers nearly all the advanced driving assists* of its bigger siblings, from one-touch lane changing to gesture control and a dashcam. With four GLA models, including two AMG hotties, one is sure to fit in—and stand out—everywhere your life takes you.



MODELS

GLA 250 SUV
221-hp inline-4 turbo, 8-speed dual-clutch automatic, front-wheel drive

GLA 250 4MATIC SUV
221-hp inline-4 turbo, 8-speed dual-clutch automatic, variable-torque 4MATIC® all-wheel drive

AMG GLA 35 SUV
AMG-enhanced 302-hp inline-4 turbo, 8-speed AMG SPEEDSHIFT® DCT dual-clutch automatic, AMG Performance 4MATIC all-wheel drive

AMG GLA 45 SUV
Handcrafted AMG 382-hp inline-4 turbo, 8-speed AMG SPEEDSHIFT DCT dual-clutch automatic, AMG Performance 4MATIC+ all-wheel drive with AMG TORQUE CONTROL



21

*Some features are optional. Please see Build Your Own and endnotes at back of brochure.





OUTFITTED TO OVERDELIVER

Even in the smallest Mercedes-Benz SUV, luxury is still a big thing. Design, craftsmanship and enduring quality are, too. The promises the GLA cabin makes to your eyes are paid off to all your senses. Front seats are supportive, power-adjustable, and each of them can store three positions in memory. The cabin air is charcoal-filtered and swept for dust and pollen.

The steering wheel is stitched in supple leather and adjusts four ways. Generous in standard form, GLA options let you indulge a bit more: Like 64 colors of ambient lighting, so you can “redecorate” any time. Surround sound from a revered German creator of high-end home audio. And a giant Panorama roof to take in sunny breezes and make the stars your own.

LUXURY HIGHLIGHTS

- Power front seats with 3-position memory
- Heated, ventilated and/or multicontour front seats*
- AMG Performance front seats with multicontour adjustment (AMG models)*
- Dual-zone climate control with dust, pollen and activated-charcoal odor filters

- Burmester® Surround Sound*
- 64-color LED ambient lighting, including dash vents*
- Heated steering wheel*
- Power tinted-glass Panorama roof*
- Modern, natural-grain wood cabin trim*

*Optional or not available on some models. Please see endnotes at back of brochure.



PREPARED FOR SPONTANEITY

Compact outside, it might surprise you how big the GLA feels inside. It's no illusion: Its wheelbase and height are up, but overhang is down. So it squeezes into tight spaces, without squeezing you. It can also fit 15% more cargo, with the added flexibility of rear seats that fold down in a 40/20/40 split, or recline. Fore-aft sliding is available, too, so you can extend

leg or cargo room on a whim. From the driver seat, the GLA feels eager yet even-tempered. Its turbo torque is always on tap—specifically a tap of a shift paddle if you're in a hurry. The steering is crisp and direct. The wishbone/multilink suspension is agile—and adjustable with the available adaptive damping. A GLA is room to zoom. Action, ready to be packed.

CAPABILITY HIGHLIGHTS

2.0L inline-4 twin-scroll turbo engine

8-speed dual-clutch automatic transmission with shift paddles

Front-wheel drive, or variable-torque 4MATIC® or AMG Performance 4MATIC all-wheel drive*

4-wheel independent suspension, adaptive damping* or 3-stage AMG RIDE CONTROL*

Off-Road Engineering Package³ with Downhill Speed Regulation (DSR) (GLA 250 4MATIC)

Power liftgate; KEYLESS-GO® with HANDS-FREE ACCESS*

40/20/40-split folding 2nd-row seats with recline and fore-aft* adjustments⁴

Aerodynamically designed roof rails



*Optional or not available on some models. Please see endnotes at back of brochure.

Mercedes-Benz engineers have spent decades looking into the future, and inventing ways to look out for yours. From occupant protection to driver assistance to passenger enjoyment, they help make every millisecond matter.



SYNCED TO HUMAN NATURE

Crisp screens—available in 7" or 10.25" sizes—are part of an advanced digital cockpit you can control via touch and talk. It's called the Mercedes-Benz User Experience (MBUX). The steering wheel, console and central screen all respond to your fingertips. Or you can just say "Hey, Mercedes" to operate features with everyday language, like "I'm warm" to lower the heat. Say "I need a coffee" and MB Navigation* can search, then show turns with live on-screen video, overlaid with guiding graphics. An Interior Assistant* lets you control some cabin features with hand gestures. You can also add a color Head-Up Display* and a built-in dashcam.* And not only is MBUX easy to learn, it can also learn your preferences over time.

TECHNOLOGY HIGHLIGHTS

- Mercedes-Benz User Experience (MBUX) with natural voice assistant, touchscreen, console touchpad, and steering-wheel Touch Controls
- Dual 7" or 10.25"* displays: reconfigurable instrument cluster, multimedia touchscreen
- MBUX Interior Assistant (gesture control)*
- Over-the-air software updating²
- MB Navigation* w/augmented video using live imagery of surroundings⁵
- Apple CarPlay™ and Android Auto⁶
- Four USB-C ports⁷; wireless charging*
- Dashcam*; Head-Up Display*⁸

FOCUSED ON THE UNFORESEEABLE

Radar, camera and other sensing technology team up to offer virtual vigilance that goes beyond human ability. It can watch ahead and your blind spots to help prevent collisions, and alert you to oncoming traffic before you exit. There's an option to help you park hands-free, plus see a birdseye view. And a suite of options that can adapt your cruise speed to posted limits. Let you change lanes with the tap of a turn signal. Help keep you from turning across oncoming traffic. And prep the restraint systems, while pre-triggering your ears' natural defenses for loud noises, if it senses a collision is imminent. Virtual eyes look out for your future, even when it's milliseconds away.

SAFETY HIGHLIGHTS

- Radar-based Active Brake Assist frontal collision mitigation⁹; Blind Spot Assist with Exit Warning Assist¹⁰; rearview camera¹¹
- PARKTRONIC with Active Parking Assist¹² with multicamera Surround View System^{11*}
- Driver Assistance Package,*¹³ including Active Distance Assist DISTRONIC® cruise control; Active Steering Assist; Evasive Steering Assist; Route-based Speed Adaptation; Active Brake Assist w/Cross-Traffic Function; PRE-SAFE® PLUS with rear-impact preparation and hearing protection technology¹⁴; and Active Blind Spot, Emergency Stop, Lane Change, Lane Keeping, and Speed Limit Assists



*Optional or not available on some models. Please see endnotes at back of brochure.

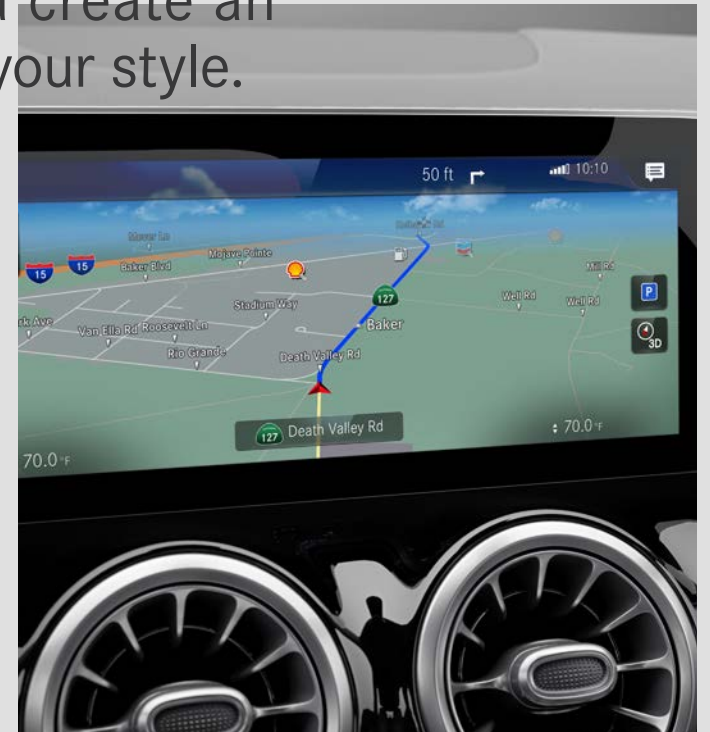
OPTION PACKAGES

While it's generous with standard features, the GLA's menu of options can help you create an SUV that fits your life and expresses your style.



STYLING PACKAGES

- AMG Line (GLA 250):
- AMG body styling
- Chrome diamond-block grille
- 19" AMG® twin 5-spoke wheels¹
- Sport front seats and steering wheel¹⁵
- Brushed stainless steel pedals
- AMG floor mats
- Night Package adds:
- Gloss-black exterior and wheel accents



MULTIMEDIA PACKAGE

- MB Navigation⁵
- Augmented video for navigation
- 3 years of Live Traffic Info²
- 3 years of no-charge map updates²
- Speed Limit Assist¹³



DRIVER ASSISTANCE PACKAGE

- Active Distance Assist DISTRONIC®
- Active Steering Assist
- Route-based Speed Adaptation
- PRE-SAFE® PLUS and PRE-SAFE Sound
- Active Brake Assist w/Cross-Traffic Function
- Evasive Steering Assist
- Active Blind Spot, Emergency Stop, Lane Change, Lane Keeping, and Speed Limit Assists¹³

GLA SUV

*BUILT FOR A
WIDER WORLD*

GLA 250 / GLA 250 4MATIC

*AND FOR A
WILDER ONE*





GLA 250 4MATIC

/221-HP INLINE-4 TURBO ENGINE
/4MATIC® ALL-WHEEL DRIVE
/IRIDIUM SILVER

/20" AMG® MULTISPOKE WHEELS¹
/AMG LINE AND NIGHT PACKAGE
/PANORAMA ROOF

GLA 250 4MATIC SPECIFICATIONS

/ ENGINE 2.0L inline-4 turbo

/ TRANS 8G-DCT 8-speed auto

/ POWER 221 hp @ 5,500 rpm

/ 0-60 MPH → 6.8 sec¹⁶ **/ DRIVE**

Variable-torque 4MATIC[®] all-wheel

/ WHEELS 18" twin 5-spoke¹

SUV
SUV
SUV
SUV
SUV



SUV
SUV



It's the 21st year of the 21st century. What are you looking forward to the most? Weekend escapes? An epic road trip? Or just a little fun every day? The new, second-generation GLA 250 is ready for your adventures—the ones you'll plan out and those that just pan out. Its turbo engine and quick-shifting 8-speed can hustle more quickly yet more smoothly. Its richer, roomier cabin lets you stretch out more. While it reaches out to you with technology that's not merely user-friendly—it's sociable, thoughtful, helpful, and so devoted that it pays attention to your likes and takes them to heart.

The GLA 250 4MATIC's all-wheel drive can vary nearly all its torque between the front and rear axles based on real-time conditions. And its 24/33-mpg city/highway EPA estimate¹⁷ is within 1 mpg of the nimble two-wheel-drive GLA 250. In either, you'll enjoy the commanding view of an SUV with the rewarding response of a sporty compact. SUV versatility is wrapped in leading-edge innovation—from luxury to safety to connectivity and driver assists.* That's what makes it a Mercedes-Benz. And what makes it an ideal companion as you explore your own wide—and sometimes wild—world.

221-HP 2.0L INLINE-4 TURBO ENGINE. FRONT-WHEEL DRIVE OR VARIABLE-TORQUE 4MATIC® ALL-WHEEL DRIVE. UP TO 50.5 CU FT OF CARGO SPACE.⁴ LED HEADLAMPS AND TAILLAMPS. BLIND SPOT ASSIST W/EXIT WARNING. 18" ALLOY WHEELS¹ (OPTIONS TO 20"). DUAL COLOR DIGITAL DISPLAYS, WITH CENTRAL MULTIMEDIA TOUCHSCREEN. MBUX WITH "HEY, MERCEDES" DIGITAL VOICE ASSISTANT. APPLE CARPLAY™ AND ANDROID AUTO.⁶

*Some features are optional. Please see Build Your Own and endnotes at back of brochure.

AMG GLA SUV



DRIVING PERFORMANCE

*MORE OF A
GOOD THING*

AMG GLA 35 / AMG GLA 45

*AND THE
MOST OF IT*



AMG
DRIVING PERFORMANCE



AMG GLA 45

/ HANDCRAFTED 382-HP AMG
INLINE-4 TURBO ENGINE
/ AMG PERFORMANCE 4MATIC+

/ PATAGONIA RED
/ 21" AMG® CROSS-SPOKE WHEELS¹
/ AMG NIGHT PACKAGE

AMG GLA 45 SPECIFICATIONS

/ENGINE Handcrafted AMG 2.0L

inline-4 turbo **/POWER** 382 hp

@ 6,500 rpm **/0-60 MPH** →

4.3 sec¹⁶ **/DRIVE** Variable-torque

AMG Performance 4MATIC+

/WHEELS¹ 19" AMG[®] 10-spoke

AMG
AMG
AMG
AMG
AMG



You've never enjoyed a two-liter container of refreshment like these. Introducing the 302-hp AMG GLA 35, and a new, more potent mix of the highest-hp 4-cylinder in production, the AMG GLA 45—now with 382 handcrafted horses. Under the red-stripped cover of the GLA 35's 2.0L inline-4, a liquid-cooled turbo with increased boost helps rush you to 60 in 5.1 seconds.¹⁶ AMG Performance 4MATIC[®] with fully variable torque is integrated into the 8-speed dual-clutch gearbox, for extra lightness. With each engine built by its own master, the GLA 45 is like a two-liter bottle of hot sauce: two-stage

direct/port fuel injection, a more rigid chilled-cast block, and an astounding 30.5 psi of max turbo boost can flash to 60 mph in just 4.3 seconds. AMG Performance 4MATIC+ can also deliver the all-out fun of a rear-drive sports car, thanks to the precise rear-wheel vectoring of AMG TORQUE CONTROL. The AMG DYNAMIC PLUS Package* can spice up the GLA 45 even zestier. Core ingredients in every AMG GLA include aero-aggressive body elements, a vertical-bar grille and AMG-detailed widescreen digital cockpit. Season yours to taste from a menu of wheel, styling and seating options.

302-HP AMG-ENHANCED (GLA 35) OR 382-HP HANDCRAFTED AMG (GLA 45) INLINE-4 TURBO ENGINE.

AMG SPEEDSHIFT[®] DCT 8-SPEED.

AMG PERFORMANCE 4MATIC (GLA 35) OR 4MATIC+ (GLA 45) AWD.

AMG DYNAMIC SELECT DRIVE MODES, AMG DRIVE UNIT.*

AMG SPORT EXHAUST.

AMG RIDE CONTROL SPORT SUSPENSION WITH 3-STAGE DAMPING.

19" (UP TO 21"*) AMG[®] WHEELS!

DUAL 10.25" DIGITAL DISPLAYS.

*Optional or not available on some models. Please see endnotes at back of brochure.

AMG
AMG

BUILD YOUR OWN

● Standard ○ Optional ▲ No-charge option — Not available

SPECIFICATIONS		GLA 250 / GLA 250 4MATIC	AMG GLA 35	AMG GLA 45
Engine	Type	2.0L inline-4 turbo with Direct Injection	AMG-enhanced 2.0L inline-4 turbo with Direct Injection	Handcrafted 2.0L inline-4 turbo with Direct Injection
	Power	221 hp @ 5,500 rpm	302 hp @ 5,800 rpm	382 hp @ 6,500 rpm
	Torque	258 lb-ft @ 1,800 rpm	295 lb-ft @ 3,000-4,000 rpm	354 lb-ft @ 4,750-5,000 rpm
Automatic transmission		8G-DCT dual-clutch 8-speed with shift paddles	AMG SPEEDSHIFT® DCT dual-clutch 8-speed with shift paddles	AMG SPEEDSHIFT DCT dual-clutch 8-speed with shift paddles
Acceleration, 0-60 mph ⁶		6.8 sec / 6.6 sec	5.1 sec	4.3 sec
Wheels ¹		18" twin 5-spoke with all-season Extended Mobility tires	19" AMG® twin 5-spoke with all-season Extended Mobility tires	19" AMG 10-spoke with high-performance tires
Suspension		4-wheel independent strut/wishbone front and multilink rear	AMG RIDE CONTROL Sport Suspension w/3-stage damping, 4-wheel independent strut/wishbone front and multilink rear	AMG RIDE CONTROL Sport Suspension w/3-stage damping, 4-wheel independent strut/wishbone front and multilink rear
Drivetrain		Front-wheel drive / 4MATIC® variable-torque all-wheel drive	AMG Performance 4MATIC variable-torque all-wheel drive	AMG Performance 4MATIC+ fully variable all-wheel drive with AMG TORQUE CONTROL

DIMENSIONS		GLA 250 / GLA 250 4MATIC	AMG GLA 35	AMG GLA 45
Wheelbase		107.4"	107.4"	107.4"
Overall length		173.6"	174.6"	174.6"
Overall height		63.6"	62.5"	62.5"
Overall width	w/mirrors	79.5"	79.5"	79.5"
Curb weight		3,395 lbs / 3,527 lbs	3,653 lbs	3,847 lbs
Headroom	front-rear	39.0" / 38.1"	39.0" / 38.1"	39.0" / 38.1"
Legroom	front-rear	41.0" / 38.0"	41.0" / 38.0"	41.0" / 38.0"
Shoulder room	front-rear	55.9" / 54.8"	55.9" / 54.8"	55.9" / 54.8"
Cargo capacity, ⁴ floor to ceiling	Behind rear seat	15.4 cu ft (floor to ceiling)	15.4 cu ft (floor to ceiling)	15.4 cu ft (floor to ceiling)
	Rear seats folded	50.5 cu ft (floor to ceiling)	50.5 cu ft (floor to ceiling)	50.5 cu ft (floor to ceiling)

KEY STANDARD FEATURES

GLA 250 GLA 250 4MATIC AMG GLA 35 AMG GLA 45	PERFORMANCE AND EFFICIENCY
● ● ● ●	ECO Start/Stop system
● ● ● ●	DYNAMIC SELECT with ECO, Comfort, Sport and Individual modes
— — ● ●	AMG DYNAMIC SELECT with Comfort, Slippery, Sport, Sport+ and Individual modes
— ● — —	Off-Road Engineering Package ³ with Off-Road DYNAMIC SELECT driving mode, Downhill Speed Regulation (DSR) for maintaining a preset "crawl speed," and off-road display on central multimedia screen
— — — ●	RACE START function
● ● ● ●	Electric parking brake with automatic release in Drive or Reverse
— ● — —	4MATIC variable-torque all-wheel drive
— — ● —	AMG Performance 4MATIC variable-torque all-wheel drive
— — — ●	AMG Performance 4MATIC+ fully variable all-wheel drive
● ● ● ●	Torque Vectoring Brake ESP® Dynamic Cornering Assist on AMG models
— — — ●	AMG TORQUE CONTROL with torque-vectoring rear differential

GLA 250 GLA 250 4MATIC AMG GLA 35 AMG GLA 45	COMFORT AND CONVENIENCE
● ● ● ●	Power front seats with 3-position memory and power lumbar support
● ● ● ●	Adjustable cushion length for front seats
○ ○ ● ●	Sport front seats with adjustable head restraints
○ ○ ○ ●	Heated front seats
● ● ● ●	3-passenger rear seat with 40/20/40-split folding/reclining seatbacks ⁴
● ● ● ●	Manually adjustable tilt/telescoping steering column
● ● ● ●	Multifunction steering wheel with Touch Control Buttons
● ● — —	Steering wheel with leather trim
— — ● ●	Sport steering wheel with flat-bottom design and Nappa leather trim
● ● ● ●	Aluminum roof rails
● ● ● ●	Rigid cargo cover
● ● ● ●	Household-type 115V outlet
● ● ● ●	Dual-zone automatic climate control with dust/pollen and odor filters
● ● ● ●	Front cupholders
○ ○ ● ●	64-color LED ambient lighting with illuminated dash vents
● ● ● ●	Rain-sensing windshield wipers
● ● ● ●	Rear-window wiper/washer w/auto-on in Reverse
● ● ● ●	Heated power side mirrors
○ ○ ○ ●	Power-folding side mirrors
○ ○ ○ ●	Auto-dimming driver-side and inside rearview mirrors; compass
● ● — —	Privacy glass on rear doors, rear quarters, and liftgate

SAFETY AND SECURITY

● ● ● ●	Active Brake Assist ⁹
● ● ● ●	ATTENTION ASSIST ¹⁸
● ● — —	Electronic Stability Program (ESP)
— — ● ●	3-stage Electronic Stability Program (ESP)
● ● ● ●	Adaptive braking technology: Predictive Brake Priming, Automatic Brake Drying, Hill-Start Assist, brake HOLD feature
● ● ● ●	Emergency-sensing Brake Assist (BAS ⁹)
● ● ● ●	Crosswind Assist
● ● ● ●	Advanced Tire Pressure Monitoring System
● ● ● ●	Rearview camera ¹¹
● ● ● ●	Blind Spot Assist with Exit Warning Assist ¹⁰
● ● ● ●	Mercedes-Benz Emergency Call ²
● ● ● ●	7 air bags
● ● ● ●	LED headlamps, Daytime Running Lamps, and taillamps
● ● ● ●	Automatic light-sensing headlamps
● ● — —	LED front foglamps Deleted with AMG Line
● ● ● ●	SmartKey remote locking, pushbutton KEYLESS-START
● ● ● ●	Power liftgate
— — — ●	KEYLESS-GO [®] with HANDS-FREE ACCESS liftgate opener
● ● ● ●	Antitheft alarm system with remote panic feature

GLA 250 GLA 250 4MATIC AMG GLA 35 AMG GLA 45	ENTERTAINMENT AND NAVIGATION
● ● — —	Reconfigurable 7" digital instrument cluster
○ ○ ● ●	Reconfigurable 10.25" digital instrument cluster
● ● — —	7" high-resolution color touchscreen multimedia display
○ ○ ● ●	10.25" high-resolution color touchscreen multimedia display
● ● ● ●	Console-mounted touchpad controller with multitouch gestures
● ● ● ●	Color multifunction display (integrated with instrument cluster)
● ● ● ●	Mercedes-Benz User Experience (MBUX)
● ● ● ●	"Hey, Mercedes" voice assistant with Natural Language Understanding
● ● ● ●	Smartphone Integration with Apple CarPlay™ and Android Auto ⁵
● ● ● ●	Bluetooth® audio streaming, hands-free Bluetooth interface
● ● ● ●	Four USB-C ports ⁷
● ● ● ●	HD Radio [®] receiver
● ● ● ●	3 years of Mercedes me connect services ²

COMFORT AND CONVENIENCE

ENTERTAINMENT AND NAVIGATION

GLA 250 GLA 250 4MATIC AMG GLA 35 AMG GLA 45	OPTION PACKAGES
○ ○ ○ ●	Premium Package

- KEYLESS-GO with HANDS-FREE ACCESS liftgate opener
- 10.25" digital instrument cluster display Std all AMG models
- 10.25" touchscreen multimedia display Std all AMG models
- Auto-dimming driver-side and inside rearview mirrors
- Power-folding side mirrors

○ ○ ○ ○	Multimedia Package Requires Premium Pkg
---------	--

- MB Navigation⁵
- MBUX Augmented Video for Navigation
- 3 years of no-charge online navigation map updates²
- 3 years of Live Traffic Information²
- Speed Limit Assist

○ ○ ○ ○	Exterior Lighting Package
---------	----------------------------------

- Active LED headlamps
- Adaptive Highbeam Assist

○ ○ ○ ○	Driver Assistance Package Requires Multimedia Pkg
---------	--

- Active Distance Assist DISTRONIC[®] Active Steering Assist¹⁹
- Active Brake Assist w/Cross-Traffic Function²⁰
- Active Blind Spot Assist,¹⁰ Active Lane Keeping Assist¹⁸
- Active Lane Change Assist²¹
- Route-based Speed Adaptation,²² Active Speed Limit Assist
- Evasive Steering Assist,²³ Active Emergency Stop Assist
- PRE-SAFE,[®] PRE-SAFE PLUS rear impact preparation, and PRE-SAFE Sound hearing protection technology¹⁴

○ ○ ○ ○	Parking Assistance Package
---------	-----------------------------------

- PARKTRONIC with Active Parking Assist¹²
- Surround View System¹¹

○ ○ — —	AMG Line Available with select interior colors (see page 22)
---------	---

- AMG body styling; chrome-tipped diamond-block grille
- 19" AMG twin 5-spoke wheels,¹ silver
- Sport steering wheel with aluminum shift paddles
- Sport front seats with adjustable head restraints
- Brushed metal pedals; AMG floor mats

○ ○ — —	Night Package Requires AMG Line
---------	--

- Gloss Black exterior accents
- 19" AMG twin 5-spoke wheels¹ w/black accents

— — ○ ○	AMG Performance Seat Packages
---------	--------------------------------------

- Seat Package: Heated, multicontour AMG Performance front seats in Neva Grey/Black MB-TeX or Black MB-TeX/DINAMICA w/Red stitching
- Seat Package Advanced: Multicontour AMG Performance front seats in Black or Bahia Brown leather GLA 35 req. heated and/or ventilated seats

— — — ○	AMG Dynamic PLUS Package Requires Multimedia Pkg
---------	---

- AMG Performance steering wheel in Nappa/DINAMICA
- AMG DYNAMIC SELECT RACE and DRIFT modes
- AMG Track Pace
- AMG DRIVE UNIT steering-wheel performance controls
- AMG High-performance Composite Braking System

GLA 250 GLA 250 4MATIC AMG GLA 35 AMG GLA 45	INDIVIDUAL OPTIONS
○ ○ ○ ○	Panorama roof
○ ○ ○ ○	Garage door opener Requires Premium Pkg
○ ○ ○ ○	Side-impact air bags for outboard rear seats
— — ○ ○	AMG Night Package
— — ○ ○	AMG Aerodynamics Package Requires AMG Night Pkg
○ ○ — —	Adjustable suspension with Adaptive Damping System and Direct-steer
— — ○ ○	AMG Track Pace Also in AMG Dynamic PLUS Pkg; requires Multimedia Pkg
○ ○ ○ ●	Heated front seats Also in AMG Performance Seat Pkg
○ ○ ○ ○	Heated and ventilated front seats NA with MB-TeX/DINAMICA upholstery
○ ○ — —	Multicontour front seats NA with AMG Line; requires Black or Macchiato Beige MB-TeX upholstery; also in AMG Performance Seat Pkgs
○ ○ ○ ○	Adjustable rear seats ⁴ Up to 5.5" fore-aft, includes armrest with cupholders
○ ○ — —	Heated steering wheel Replaces sport steering wheel in AMG Line
○ ○ ● ●	64-color LED ambient lighting with illuminated dash vents
— — ○ ○	AMG illuminated front door sills
○ ○ ○ ○	Burmester [®] Surround Sound System
○ ○ ○ ○	SiriusXM [®] 6-month All Access trial ²⁴
○ ○ ○ ○	Inductive wireless charging and NFC pairing ²⁵
○ ○ ○ ○	MBUX Interior Assistant (gesture control) Requires Premium Pkg
○ ○ ○ ○	Head-Up Display ⁸ AMG models include AMG-specific content
○ ○ ○ ○	Dashcam Requires Multimedia Pkg
— — ○ ○	AMG Performance steering wheel in Nappa leather
— — ○ ○	AMG Performance steering wheel in Nappa/DINAMICA Also in AMG Dynamic PLUS Pkg
— — ○ ○	AMG Performance steering wheel in DINAMICA Includes AMG DRIVE UNIT
— — ○ ○	AMG DRIVE UNIT steering-wheel performance controls Requires any AMG Performance steering wheel; also in AMG Dynamic PLUS Pkg
▲ ▲ ▲ ▲	MB-TeX upholstery
▲ ▲ ▲ ▲	MB-TeX/DINAMICA upholstery w/Red stitching GLA 250 requires AMG Line; AMG models include red seat belts
○ ○ ○ ○	Leather upholstery Requires heated and/or ventilated front seats; AMG models include topstitched MB-TeX upper dash trim
— — ▲ ▲	Replace red seat belts with black Available with MB-TeX/DINAMICA only
● ● — —	Spiral Look trim NA on GLA 250 with AMG Line
▲ ▲ ● ●	Carbon Structure trim GLA 250 requires AMG Line
— — ▲ ▲	Brushed aluminum trim
○ ○ ○ ○	Natural Grain Black Linden wood trim
○ ○ ○ ○	Natural Grain Brown Walnut wood trim NA on GLA 250 with AMG Line
○ ○ ○ ○	Metallic paintwork
— — — ○	designo paintwork

Please see endnotes at back of brochure.

UPHOLSTERY

● Standard ○ Optional ▲ No-charge option

MB-TEX



▲ GLA 250 *Black or Macchiato Beige*

MB-TEX



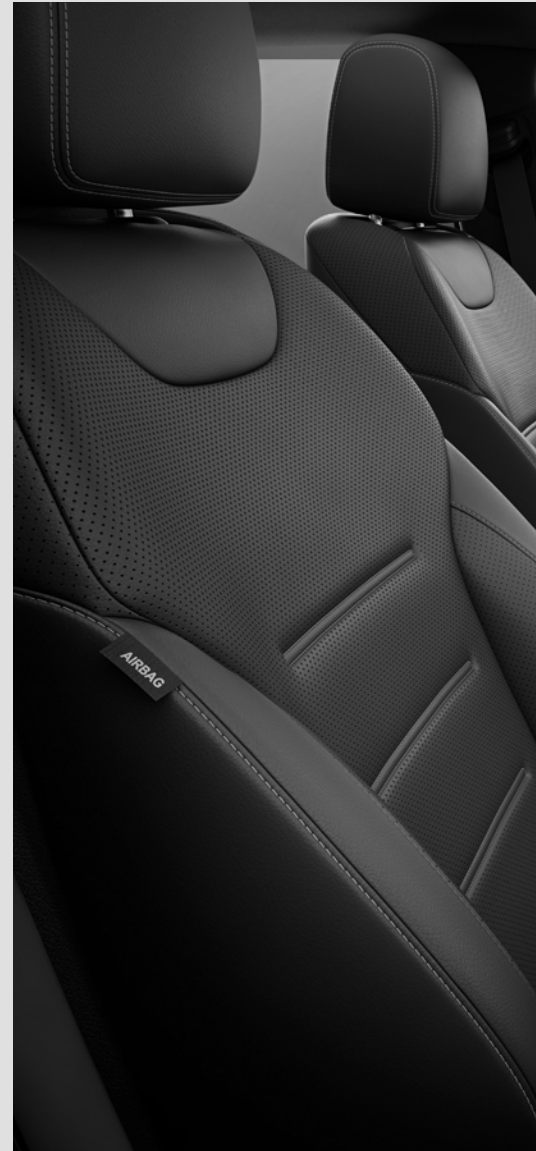
▲ GLA 250
Neva Grey/Black; requires AMG Line
▲ AMG GLA 35, GLA 45
Neva Grey/Black

MB-TEX/DINAMICA



▲ GLA 250
Black w/Red topstitching; requires AMG Line
▲ AMG GLA 35, GLA 45
Black w/Red topstitching

LEATHER



○ GLA 250
Requires heated and/or ventilated front seats
○ AMG GLA 35
Requires heated and/or ventilated front seats; includes topstitched MB-TEX dash
○ AMG GLA 45
Includes topstitched MB-TEX dash

AMG PERFORMANCE FRONT SEATS

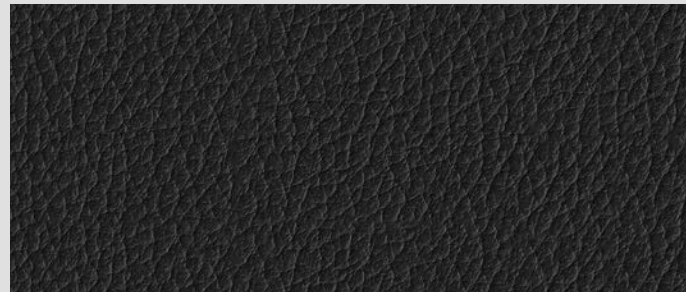


○ AMG GLA 35, GLA 45
AMG Performance Seat Pkg, with Black MB-TEX/DINAMICA w/Red topstitching or Neva Grey/Black MB-TEX
○ AMG GLA 35, GLA 45
AMG Performance Seat Pkg Advanced, with Black or Bahia Brown leather; requires heated and/or ventilated seats

INTERIOR COLORS & TRIM

● Standard ○ Optional ▲ No-charge option

BLACK



MB-Tex *GLA 250 (NA with AMG Line)*
Leather *All models*

MACCHIATO BEIGE



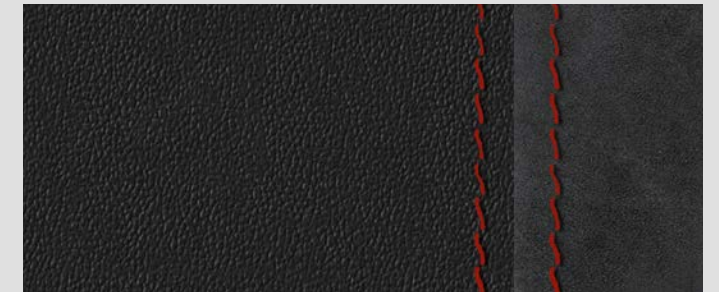
MB-Tex *GLA 250 (NA with AMG Line)*

NEVA GREY/BLACK



MB-Tex *GLA 250 (requires AMG Line)*
AMG models

BLACK w/RED TOPSTITCHING



MB-Tex/DINAMICA *GLA 250 (requires AMG Line)*
AMG models (includes red seat belts; black seat belts available for no charge)

BAHIA BROWN



Textured leather *GLA 250 (NA with Patagonia Red metallic paint)*
AMG models

TITANIUM GREY/BLACK



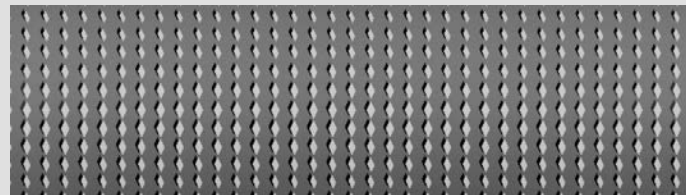
Leather *GLA 250 (requires AMG Line)*
AMG models

CLASSIC RED/BLACK



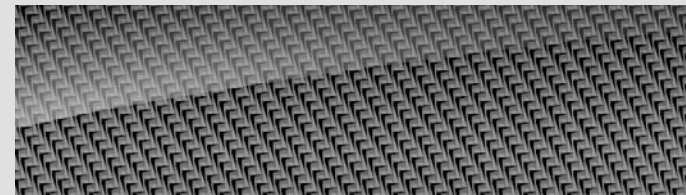
Leather *GLA 250 (requires AMG Line; NA with Denim Blue metallic paint)*
AMG models

SPIRAL LOOK



▲ *GLA 250 NA with AMG Line*

CARBON STRUCTURE



● *AMG models* ▲ *GLA 250 Requires AMG Line*

NATURAL GRAIN BLACK LINDEN WOOD



○ *All models*

NATURAL GRAIN BROWN WALNUT WOOD



○ *All models NA on GLA 250 with AMG Line*

BRUSHED ALUMINUM



▲ *AMG models*

PAINTWORK

POLAR WHITE



NIGHT BLACK



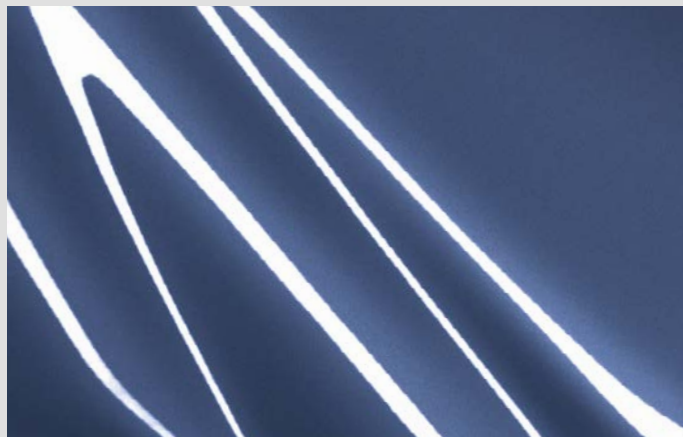
DIGITAL WHITE METALLIC



COSMOS BLACK METALLIC



DENIM BLUE METALLIC



IRIDIUM SILVER METALLIC



MOUNTAIN GREY METALLIC



PATAGONIA RED METALLIC



NA on GLA 250 with Classic Red interior

NA on GLA 250 with Bahia Brown interior

designo[®] MOUNTAIN GREY MAGNO



Matte finish—AMG models

WHEELS

● Standard ○ Optional ▲ No-charge option

18" TWIN 5-SPOKE



● GLA 250
NA with AMG Line

19" 10-SPOKE



w/MATTE BLACK ACCENTS
○ GLA 250
NA with AMG Line

19" AMG® TWIN 5-SPOKE



SILVER
○ GLA 250
AMG Line

w/BLACK ACCENTS
○ GLA 250
Night Pkg

20" AMG MULTISPOKE



SILVER
○ GLA 250
Requires AMG Line

BLACK
○ GLA 250
Requires Night Pkg

BACK TO INDEX

24

BUILD YOUR OWN

19" AMG TWIN 5-SPOKE



● AMG GLA 35

19" 10-SPOKE



SILVER
● AMG GLA 45
▲ AMG GLA 35

MATTE BLACK
○ AMG GLA 35,
AMG GLA 45
Requires AMG Night Pkg

20" AMG TWIN 5-SPOKE



SILVER
○ AMG GLA 35,
AMG GLA 45

MATTE BLACK
○ AMG GLA 35,
AMG GLA 45
Requires AMG Night Pkg

21" AMG CROSS-SPOKE



MATTE BLACK
○ AMG GLA 35, AMG GLA 45
Requires AMG Night Pkg

21" AMG MULTISPOKE



SILVER
○ AMG GLA 35,
AMG GLA 45

MATTE BLACK
○ AMG GLA 35,
AMG GLA 45
Requires AMG Night Pkg

GO TO MBUSA.COM

24

BUILD YOUR OWN

OWNERSHIP & EXPERIENCE



DAILY COMMUTE OR ROADTRIP, THOUGHTFUL TECHNOLOGY HELPS MAKE ANY JOURNEY A JOY.

Mercedes me connect puts a network of features in your car, on your smartphone, and in the digital world around you.² And all of them collaborate to help keep you on track, on time, and feeling you're on top of your real world.

- You can remote-start your car, locate where it's parked, configure vehicle settings from your phone, and more.
- You can look up destinations on your phone and send them to the available MB Navigation system in your car.
- You can offer WiFi to your passengers, and enjoy audio from all over the planet with TuneIn Radio.

Models with Car-to-X Communication can share info on traffic, road hazards and other conditions with each other, via a central reporting base. So you might find out about a tie-up on your route before you get caught up in it.

The map database for your car's available MB Navigation system can be updated in your driveway, over the air, up to twice a year—with no need to bring it to the dealership.

WHEREVER YOU DRIVE, THERE'S A TEAM OF SUPPORTIVE PEOPLE LOOKING OUT FOR YOU.

Mercedes-Benz was the first automaker to introduce its own Roadside Assistance Program in the US. For more than 35 years, customers have called on—and counted on—factory-trained experts in times of need.²⁶

- A button in your car can connect you. If an air bag or seat-belt tensioner is activated, your car can place the call on your behalf, and even transmit your location.
- They can send help—usually a trained dealer service technician—to your location, even for a jump-start.
- If you see a warning light, so can the experts, and they can often help diagnose trouble over the phone.

Your Mercedes-Benz dealer is helping make service and maintenance even more convenient, with options such as Express Service, Mobile Service, pickup and delivery, online scheduling, and contactless payment. Your dealer can tell you more about the specific benefits they offer.

YOUR MERCEDES-BENZ EXPERIENCE SHOULD ALWAYS FEEL SPECIAL.

Driving a Mercedes-Benz feels like joining a club, as well as a family. Wherever you go, you're part of a history that started with the first car, and always keeps racing ahead.

- For decades, groundbreaking innovations have protected, entertained and indulged Mercedes-Benz drivers first. While many have gone on to become the standard for all cars, you get to drive the future, today.
- From the AMG Lounge to #MBPhotoPass on Instagram, Mercedes-Benz owners have many ways to connect and interact.

Your car and your dealer are in on it, too.

- Mercedes me lets your car communicate its service needs to your preferred dealer.
- Your dealer can reach out to you to book an appointment or offer drive-in service.

COMMITTED TO COMMUNITY

Mercedes-Benz USA is committed to educating and empowering the next generation of diverse leaders.

To help equip them with the tools for success, MBUSA partners with two national organizations that invest in the futures of young people in communities across the country. As a Mercedes-Benz driver, you become a part of this effort to give hundreds of thousands of youth a better life today, and all of us a brighter tomorrow.

Learn more about how Mercedes-Benz USA gives back at MBUSA.com/community



A nationwide network of youth sports programs, Laureus Sport for Good USA is focused on improving the health, education, employment and social cohesion of youth in underserved communities. Since 2012, Laureus USA has helped nearly half a million young people in 150 cities.

To learn more, visit laureus.com

JOHNNY MAC SOLDIERS FUND

Johnny Mac Soldiers Fund helps honor military service and sacrifice by providing scholarships to veterans and military family members—particularly the children of our nation's fallen and disabled. Since 2014, Johnny Mac has awarded more than \$16 million in scholarships to some 2,000 students.

To learn more, visit johnnymac.org

ENDNOTES

- * Item is optional or not available on some models. See *Build Your Own* in this brochure or visit MBUSA.com for more information.
- 1 Lower-aspect-ratio tires and accompanying wheels provide substantially increased treadwear, increased tire noise and reduced ride comfort. Serious wheel and tire damage may occur if the vehicle is operated on rough or damaged road surfaces or upon encountering road debris or obstacles. These tires are not designed for use on snow and ice. Winter tires mounted on appropriately sized and approved wheels are recommended for driving in those conditions.
 - 2 All *Mercedes me* services operate only where cellular and GPS signals are available, which are provided by third parties and not within the control of Mercedes-Benz USA, LLC. *Mercedes me connect assist* services, and 3 years of *Mercedes me connect* services are included at no additional charge with new-vehicle sales and leases at an authorized Mercedes-Benz dealer. Models with MB Navigation also include 3 years of over-the-air map updates (up to twice per year), 3 years of live traffic information provided by HERE Technologies, and a 1-month trial (up to 1GB) of in-vehicle WiFi and streaming audio. Subscriber Agreement is required for service to be active. Some services are only available on select vehicles. Your PIN is required to use certain services. Connection may be limited by cellular signal and other factors. Features may be introduced and updated at varying dates, and may also require a vehicle software update. Some services may be limited or restricted in some areas. Driver is responsible for complying with traffic and other laws. The *Mercedes me connect* Mobile App is compatible with Apple iPhone® models and Android-based phones, and may require a software update. See your dealer or MBUSA.com/mercedesme for details.
 - 3 Off-road driving should only be attempted by drivers with the necessary skill, experience and understanding of the vehicle's limits. Read Operator's Manual before driving off-road.
 - 4 Unsecured cargo can become hazardous in a collision. Always secure cargo using the floor-mounted tie-downs.
 - 5 While the navigation system provides directional assistance, the driver must remain focused on safe driving behavior, including paying attention to traffic and street signs. The driver should utilize the system's audio cues while driving and should only consult the map or visual displays once the vehicle has been stopped in a safe place. Maps do not cover all areas or all routes within an area.
 - 6 Apple CarPlay™ is a product of Apple Inc. Android Auto is a product of Google Inc. Device and app providers' terms and privacy statements apply. Requires connected compatible device and data plan. Apps, content and features are selected solely by their providers. Connection to apps and streaming services may be limited by the device's network connection. Data usage is routed through device and subject to fees, charges and restrictions in user's wireless plan. Vehicle's factory audio/information interface may not be used simultaneously with Apple CarPlay or Android Auto. When Apple CarPlay or Android Auto is in use, the steering-wheel voice control button accesses Siri® or Google voice recognition software for voice commands.
 - 7 An adapter cable is required to connect a device with an earlier-generation USB port.
 - 8 Display may not be visible with certain eyewear, including polarized glasses.
 - 9 Active Brake Assist may not be sufficient to avoid an accident. It does not react to certain stationary or suddenly moving objects or pedestrians, may not react in certain situations where objects cannot be clearly identified, nor does it recognize or predict the curvature and/or lane layout of the road or every movement of vehicles and pedestrians ahead. It is the driver's responsibility at all times to be attentive to traffic and road conditions, and to provide the steering, braking and other driving inputs necessary to retain control of the vehicle. Drivers are cautioned not to wait for the system's alerts before braking, as that may not afford sufficient time and distance to brake safely. See Operator's Manual for system operating speeds and additional information and warnings.
 - 10 Blind Spot Assist is a warning system only. Blind Spot Assist or Active Blind Spot Assist may not be sufficient to avoid all accidents involving vehicles in your blind spot and does not estimate the speed of approaching vehicles. It must not be used as a substitute for driver awareness and checking of surrounding traffic conditions. Exit Warning Assist feature operates up to three minutes after vehicle is switched off, or until indicator in mirror flashes three times. See Operator's Manual for system's operating speeds and additional information and warnings.
 - 11 Rearview camera and Surround View System do not audibly notify driver of nearby objects and are not a substitute for actively checking around the vehicle for any obstacles or people. Images displayed may be limited by camera field of view, weather, lighting conditions and the presence of dirt, ice or snow on the cameras.
 - 12 Parking assistance systems are not substitutes for driver attention to the immediate surroundings, as well as any people, animals or vehicles in or approaching the vehicle's maneuvering range. System cannot determine if a space is legally available or of a suitable surface for parking. See Operator's Manual for additional information, tips and warnings.

- 13 Even the most advanced safety systems may not be sufficient to avoid an accident. Please refer to more detailed information on specific systems elsewhere in this brochure, at MBUSA.com, and in the vehicle's Operator's Manual. Some systems may be optional.
- 14 PRE-SAFE® closes the side windows when the system's sensors detect side movements that suggest a possible rollover or side impact. A small gap is left near the fully closed position. Audio/multimedia system must be turned on for PRE-SAFE Sound to operate. PRE-SAFE PLUS cannot prevent a collision, and does not alert the driver of an impending collision or system activation. It does not intervene if vehicle is backing up, and does not apply the brakes if the driver is accelerating or if Active Parking Assist is operating.
- 15 Sport steering wheel is excluded from AMG Line package if heated steering wheel is ordered.
- 16 Stated rates of acceleration are estimated based upon manufacturer's track results and may vary depending on model, environmental and road surface conditions, driving style, elevation and vehicle load.
- 17 2021 EPA estimated fuel economy. Compare the estimated mpg to the estimated mpg of other vehicles. You may get different mileage depending on how fast you drive, weather conditions and trip length.
- 18 Driving while drowsy or distracted is dangerous and must be avoided. ATTENTION ASSIST® is a warning system only. ATTENTION ASSIST and Active Lane Keeping Assist may be insufficient to alert a fatigued or distracted driver of lane drift and cannot be relied on to avoid an accident or serious injury. See Operator's Manual for system's operating speeds and additional information and warnings.
- 19 Active Distance Assist DISTRONIC® cruise control is not a substitute for active driving involvement. It does not adapt cruising speed in response to stationary objects, nor does it predict the curvature and lane layout of the road ahead or the movement of vehicles ahead. Active Steering Assist requires driver to hold steering wheel and be ready to steer vehicle at any time. It may not recognize lane markings in some lighting, weather and road conditions. It is the driver's responsibility at all times to be attentive to traffic and road conditions, and to provide the steering, braking and other driving inputs necessary to retain control of the vehicle. Drivers are cautioned not to wait for the system's alerts before braking, as that may not afford sufficient time and distance to brake safely.
- 20 Drivers are cautioned not to wait for the system's alerts before braking, as that may not afford sufficient time and distance to brake safely. Braking effectiveness also depends on proper brake maintenance, and tire and road conditions. See Operator's Manual for system operating speeds and additional information and warnings.
- 21 Active Lane Change Assist is not a substitute for active driving involvement. It estimates but does not predict the curvature and lane layout of the road ahead or the movement of vehicles ahead. It is the driver's responsibility at all times to be attentive to traffic and road conditions, and to provide the driving inputs necessary to retain control of the vehicle. System may not detect some objects, obstacles or vehicles in the area into which the vehicle would move. See Operator's Manual for system operating speeds and additional information and warnings.
- 22 Driver is responsible for safely slowing and/or stopping vehicle at intersections, and for giving right-of-way to other drivers. System is not a substitute for driver awareness to posted speed limits and other conditions. Driver is responsible for safely operating vehicle in accordance with local traffic laws and driving conditions.
- 23 No system, regardless of how advanced, can overcome the laws of physics or correct careless driving. Please always wear your seat belt. Driver's deliberate steering inputs are required to initiate the system's action, and can override its intervention at any time. See Operator's Manual for system operating speeds and additional information and warnings.
- 24 The purchase of a new, SiriusXM®-equipped vehicle includes a 6-month introductory subscription to the SiriusXM All Access package. Eligible pre-owned vehicles equipped with SiriusXM will receive a 3-month trial subscription to SiriusXM All Access package. Trial length and service availability may vary by model, model year or trim. If you decide to continue your subscription after your trial, the plan you choose will automatically renew and you will be charged according to your chosen payment method at then-current rates. Fees and taxes apply. To cancel you must call SiriusXM at 1-866-635-2349. See SiriusXM Customer Agreement for complete terms at siriusxm.com. All fees and programming subject to change.
- 25 Wireless charging and NFC pairing available only for devices with compatible technology and size. See Operator's Manual for more information. Devices sold separately.
- 26 Roadside Assistance repairs may involve charges for parts, service and towing. Vehicle must be accessible from main roads. Depending on the circumstance, these services may be provided by an outside provider, courtesy of Mercedes-Benz Roadside Assistance. Restricted roadways, acts of nature and vehicle accessibility may limit our ability to provide services to you. For full details, eligibility requirements, and limitations/exclusions of Sign and Drive services, as well as the Roadside Assistance Program, please see your dealer.

VISIT, FOLLOW & WATCH



facebook.com/mercedesbenzusa



linkedin.com/company/mercedes-benz-usa



instagram.com/mercedesbenzusa



twitter.com/MercedesBenzUSA



youtube.com/mbusa